



WIPER ROLL CLEANER

Eco-Roll SC-ER360 removes solder paste using ultrasonic vibration. Is said to clean wiper rolls in 20 min., permitting their reuse. Measures 900 x 850 x 1200 mm. Works with most solvents.

Sawa, sawael.com

Seika Machinery Inc., seikausa.com



MACHINE STOP CONTROLLER

Cycle Stop Controller is an Ethernet-enabled device that electrically integrates with the cycle stop circuit of any machine type. When used with a software module such as line setup control, route control and MSD control, the application forces the machine to stop processing when a process validation error occurs. Eliminates the risk of building defective product due to invalid machine setup or trying to perform an operation out of sequence.

Cogiscan Inc.

cogiscan.com



COMPONENT AGE-TESTING OVEN

No. 926 is an electrically heated 250°F shelf oven and environmental test chamber. 12kW installed in Nichrome wire elements provide heat to the load. Is 68" x 30" x 66". A 1000 cfm, 1 HP recirculating blower provides horizontal airflow. Features 4" insulated walls, and aluminized steel interior and exterior. Includes digital temperature controller, manual reset excess temperature controller with separate contactors and recirculating blow airflow safety switch.

The Grieve Corp.

grievcorp.com

OTHERS OF NOTE

SOLAR CELL METALLIZATION DRYER

PVD3000 drying system enhances PV3000 metallization line. Is for solar cell production, incorporating thermal control, improved VOC management and reduced power consumption. Dryer concept is based on principles of hot air convection drying, a process conducive to thermal control at lower drying temperatures. Improves air exchange within the process chamber, enabling the dryer to manage increased VOC volume associated with higher throughput.

DEK Solar, deksolar.com

Heller Industries, hellerindustries.com

IONIC CLEANLINESS TESTING

Upgraded ionic cleanliness test systems have larger test capacity and innovative measurement software and hardware. Deliver a measurement accuracy with a range of 0.01-30 $\mu\text{g}/\text{cm}^2$ (auto-ranging) and measurement sensitivity of <0.25% of range. Test times are generally less than 5 min. Deliver a test measurement accuracy of better than 0.005 μS . Use a solid gold measurement cell and a ballistic amplifier in the measurement circuitry.

GEN3 Systems

gen3systems.com

INTEGRATED BOUNDARY SCAN, FLYING PROBE

FlyScan module comes on Pilot/Aerial flying probes and is said to automate test program generation in a single software environment; boundary scan creation for non-JTAG nets, using the extended test function and the flying probes to transform them into JTAG testable nets; elimination of test redundancies; fault diagnostics, with real-time generation of additional tests executed by the flying probes for the specific identification of the faulty component; and fault detection by the boundary scan test in the repair station environment.

Seica Inc.

seica.com

'AMMONIA-FREE' SOLDER MASK

Peelable Solder Mask (PSM-AF) is ammonia-free. Is noncorrosive, and for temporary solder/coating protection. Works particularly well with NiAu pad finishes.

Cobar

cobar.com

NEUTRAL PH AQUEOUS CLEANER

Aquanox A4703 reportedly is effective with concentrations as low as 3%. For use in spray batch and spray inline cleaners to remove OA, no-clean and RMA pastes and fluxes, including Pb-free residues. Is controlled by refractive index, both manually and when using an automated process control system. Completely water soluble, and operates at <-63°C. Flashpoint is 104°C; boiling point is 138°C.

Kyzen

kyzen.com

SCREEN PRINTER COVERS

Horizon screen printer now comes with new cover packages said to provide instant access to front and rear of platform; are lightweight and reportedly eliminate the need for further tooling. Have quick release panels. Preconfigured platforms include Horizon 01iX, Horizon 02iX and Horizon 03iX.

DEK

dek.com



FINE-PITCH WEDGE BONDER

Q2170 fine-wire (17-75 μm), automatic Al/Au automatic wedge bonder is for smaller lot sizes, multiple product variations and frequent setup changes. For packaging complex hybrid, CoB/PCB and LED display devices; achieves wedge bonding for fine gold, aluminum wire and ribbon, and is said to enable quick package conversions. Point-and-click bonding; unlimited wires; easy bond process editing; extensive program storage, and a bond parameter library.

Questar Products International
questarproducts.com



THERMAL INTERFACE SILICONE GEL

Sarcon GR-Ae comes in sheet form. Designed to transfer heat from its source to a nearby heat sink. Fills air gaps between delicate and uneven components. Offers a thermal conductivity of $1.3\text{W/m}^2\text{K}$ with a thermal resistance as low as $0.43^\circ\text{Cin}^2/\text{W}$. Gap filler pad is available in thicknesses ranging from 0.5-5.0 mm. Comes in sheets up to 200 x 300 mm, or die-cut to exact application specifications.

Fujipoly America Corp.
fujipoly.com



MANUAL REWORK STATION

MS6000 Nano rework station is a manual system for chip sizes down to 0402 mm (01005). Handles parts from taping parts feeder or individual parts feeder. Parts can be picked by a vacuum bit and positioned by the CCD camera system. Has rotatable circular glass palette for monitoring. Features dispensing capabilities with a 5 cc syringe. Options include tweezer head, center vacuum bit, and 8 mm tape feeder.

Seika Machinery Inc.
seikausa.com

OTHERS OF NOTE

PB-FREE, NO-HALOGEN SOLDER

DSP866 no-clean solder paste is said to provide print definition characterized by brick-like prints. Good release is seen on 0.00" - 0.012" apertures with print speeds in the range of 1 - 6 in. per sec. Performs during continuous printing for up to 8 hr. Residues are said to be nonconductive, noncorrosive and highly insulated. Flux classification ROL0 per J-STD-004. Comes in standard gray or patented green formula.

Qualitek International
qualitek.com

AUTOMATIC MODULAR SMD CABINET

Istorage automatic modular cabinet manages SMD reels from 7 to 15, QFP/BGA trays, PTH components, PCBs, and other parts. Can handle up to 5,500 reels. Permits multiple pick of part racks. Is barcode driven, and calculates component quantities for single or multiple orders. Includes "countdown" management for MSDs.

i-tronik
itronik.com

COMPONENT PLACEMENT MES SOFTWARE

PanaCIM Enterprise Edition MES software version 8.1 release has expanded functionality. Is beneficial for LED applications. Offline feeder and cart setup has been augmented to reinforce correct component reel-to-feeder and feeder-to-cart locations before production commences. All modules now support Japanese; other languages can be added. Visual control panel of the production monitoring and dispatch module can be customized for site-specific needs. Enterprise link module now permits more exportable real-time data to keep third-party ERP/MRP systems updated.

Panasonic Factory Solutions Co.
panasonicfa.com

'CONTINUOUS MONITORING' GRAVITY HANDLER

MT9928 now comes with dedicated setup to permit temperature sensor calibration. Is said to meet calibration equipment requirements with a temperature accuracy of $\pm 1.0^\circ\text{C}$ and a temperature stability of $\pm 0.2^\circ\text{C}$. Continuously monitors temperature stability of the DUT environment during the test time. Comes on MT9928 and MT9928XM models.

Multitest
multitest.de/region.asp

CABLE ASSEMBLY KITS

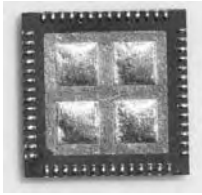
Cable Assembly Kits address the majority of component types encountered in operational production. Use mil spec style connectors with two sizes of contacts, combined with insertion/extraction tools. Additional terminals, solder sleeves, and crimp lug terminations are provided. Include a terminal soldering kit. Feature an overlay and wire list typical of those encountered in production operations. Used in the NASA Cable and Harness Training program.

STI Electronics Inc.
stielelectronicsinc.com

CO-DOPED PB-FREE SOLDER

i-SAC 387 contains cobalt for improved melting, shiny solder joints, fine grain microstructure. Also contains germanium as an antioxidant. Has a melting point of 217°C and a specific gravity of 7.5g/cm^3 . i-SAC105 has silver composition of 0.5-1.5%, and contains cobalt for bright, shiny solder joints and fine grain microstructure, and germanium. Has a melting point of 217° to 227°C and a specific gravity of 7.4g/cm^3 .

Balver-Zinn
Balverzinn.com



LEADLESS DEVICE POLYIMIDE STENCIL

StencilMate is for reworking and hand-placing leadless devices such as QFNs, MLFs and LGAs. Controllably bumps leadless devices. Build-to-order stencil pairs are said to prevent bridging of neighboring solder joints, while accommodating QFNs into stay-in-place stencils on the PCB. Comes in 0.10 to 0.20 mm thickness.

BEST Inc.

solder.net



FLEXIBLE, LIGHTWEIGHT CART

Cantilever Cart comes in standard and custom versions. Is flexible with a light-weight, small footprint. Many accessories can be clipped onto the cart. Uses include storing bins or totes at any height or location (KanBan); holding tools or work-in-progress; staging; moving heavy items (estimated 100 lb. capacity). For use in electronics test and compliance labs, or as a repair cart for machine support and maintenance personnel.

Bliss Industries

blissindustries.com



SOLAR PROFILING KIT

V-M.O.L.E. is for photovoltaic solar cells metallization. Comes with V-M.O.L.E. thermal profiler; special solar thermal barrier, which is 0.7" in height, MAP software; and special thermocouples. Includes OK button. Three-channel profiler provides quick-charge capability to go from dead-to-profiling in fewer than 15 min.

ECD

ecd.com

OTHERS OF NOTE

MATERIAL SURFACE VISION SOFTWARE

VisionPro software combines visual defect detection and classification technology with a simple user interface. Enables defect detection, classification, and surface texture assessment during manufacturing. Monitors material visual appearance. Automatically identifies potential defects in the material's surface using statistical analysis; classifies the defects into groups based on similarity in contrast, texture and/or geometry.

Cognex

cognex.com/vprosurface

HIGH-TEMP ALUMINA ADHESIVE

Resbond 989 high-purity alumina adhesive offers continuous protection to 3000°F. Applies directly to metals, glass, ceramics, graphite and silicon carbide. Cures at room temperature and provides high bond strength and excellent electrical, moisture, chemical and solvent resistance. Applications include bonding and protecting thermocouples, heat sensors, and components from moisture and humidity at elevated temperatures.

Cotronics

cotronics.com

SCALABLE SOLDERING PROFILER

Solderstar Pro RF is for reflow and wave solder temperature profiling, the former on 6, 9, 12 or 16 channels. When used in conjunction with the Waveshuttle wave solder process analyzer, it forms a wave analysis tool capable of detailed wave temperature profile and wave contact measurements. Incorporates compact RF data-logger that provides a two-way RF data link with a PC. Analyzes temperature profile in real time.

SolderStar Ltd.

solderstar.eu

HIGH-SPEED 3-D SPI

VP6000 inspects solder paste deposition at inline speeds. Uses structured light to perform 3-D inspections. Automatically adjusts z-axis for board warpage. Reportedly programs in less than 15 min. using a single Gerber and CAD placement file. Includes full complement of SPC charts and graphs.

Omron Electronics

omron247.com

SILICONE POTTING COMPOUND

Tonsan 1521 is a two-part silicone potting material used in junction boxes to provide reliable sealing for diodes and connectors. Shows strong adhesion to PPO, TPT, brass and Sn-plated leads. Features excellent aging and heat resistance; is for automatic dispensing applications.

Beijing Tonsan Adhesives

ts.com.cn/en_index.asp

INERT ATMOSPHERE CABINET OVEN

Oven No. 799 is for processing ceramic components prior to assembly. Features max. operating temp. of 750°C; workspace dimensions of 38" x 38" x 50"; 60 KW installed in alloy wire high-temperature plug heaters; recirculating blower providing horizontal airflow; 12" thick insulated walls; and stainless steel interior.

The Grieve Corp.

grievecorp.com